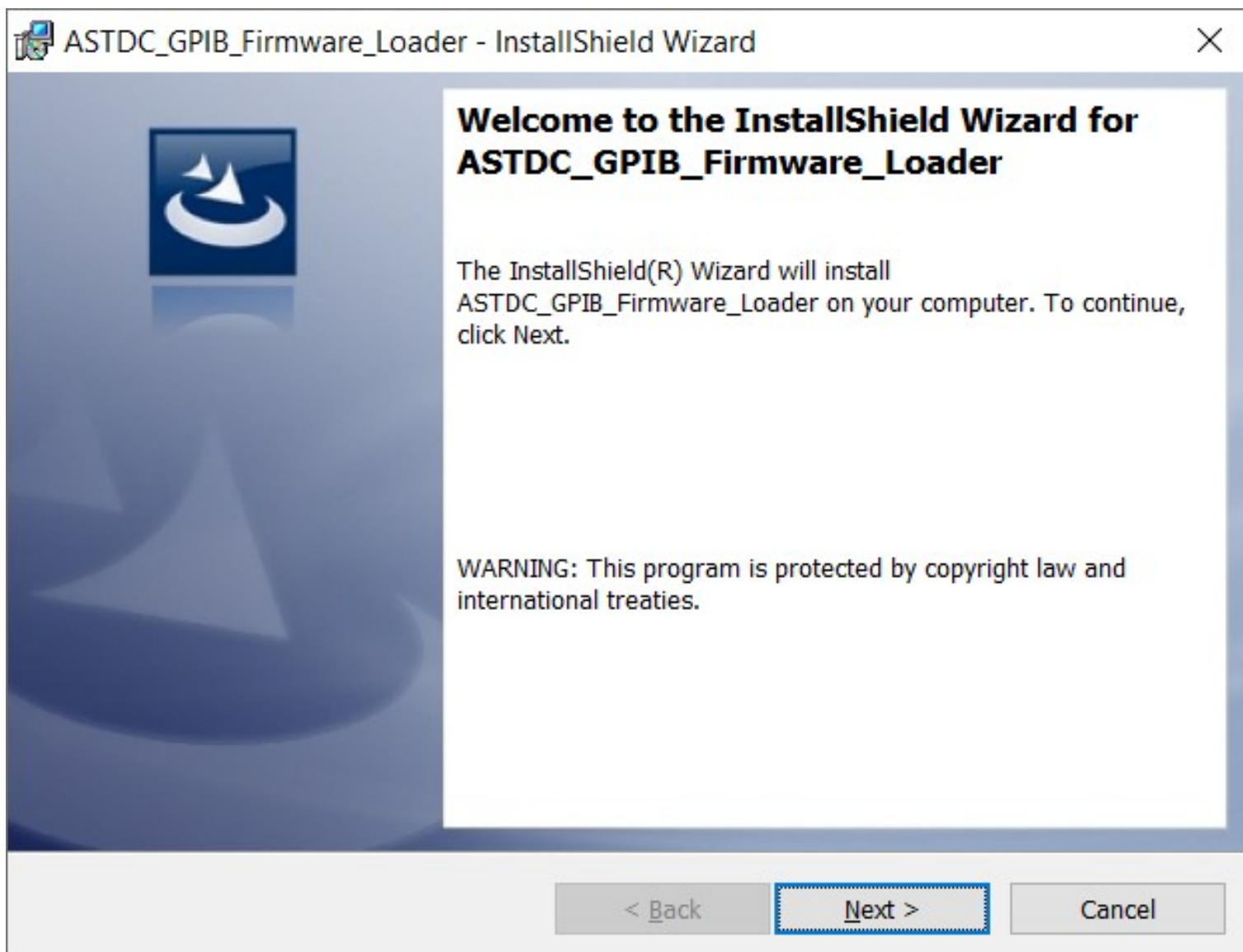


Installation Guide for ASTDC GPIB Firmware Loader

Installation Instructions

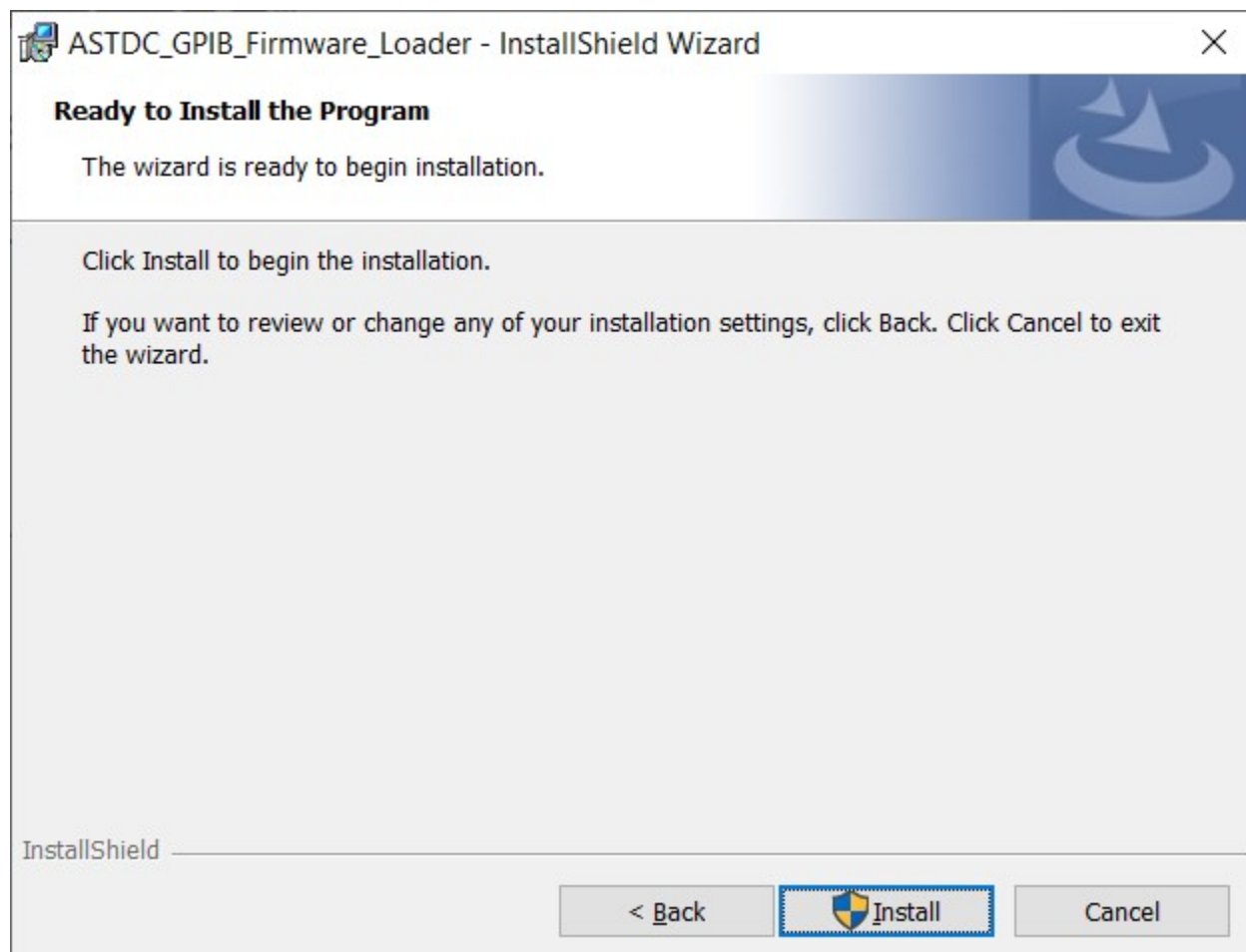
1. Download and install ASTDC GPIB Firmware Loader. Follow the onscreen instructions. Click Next on welcome screen.



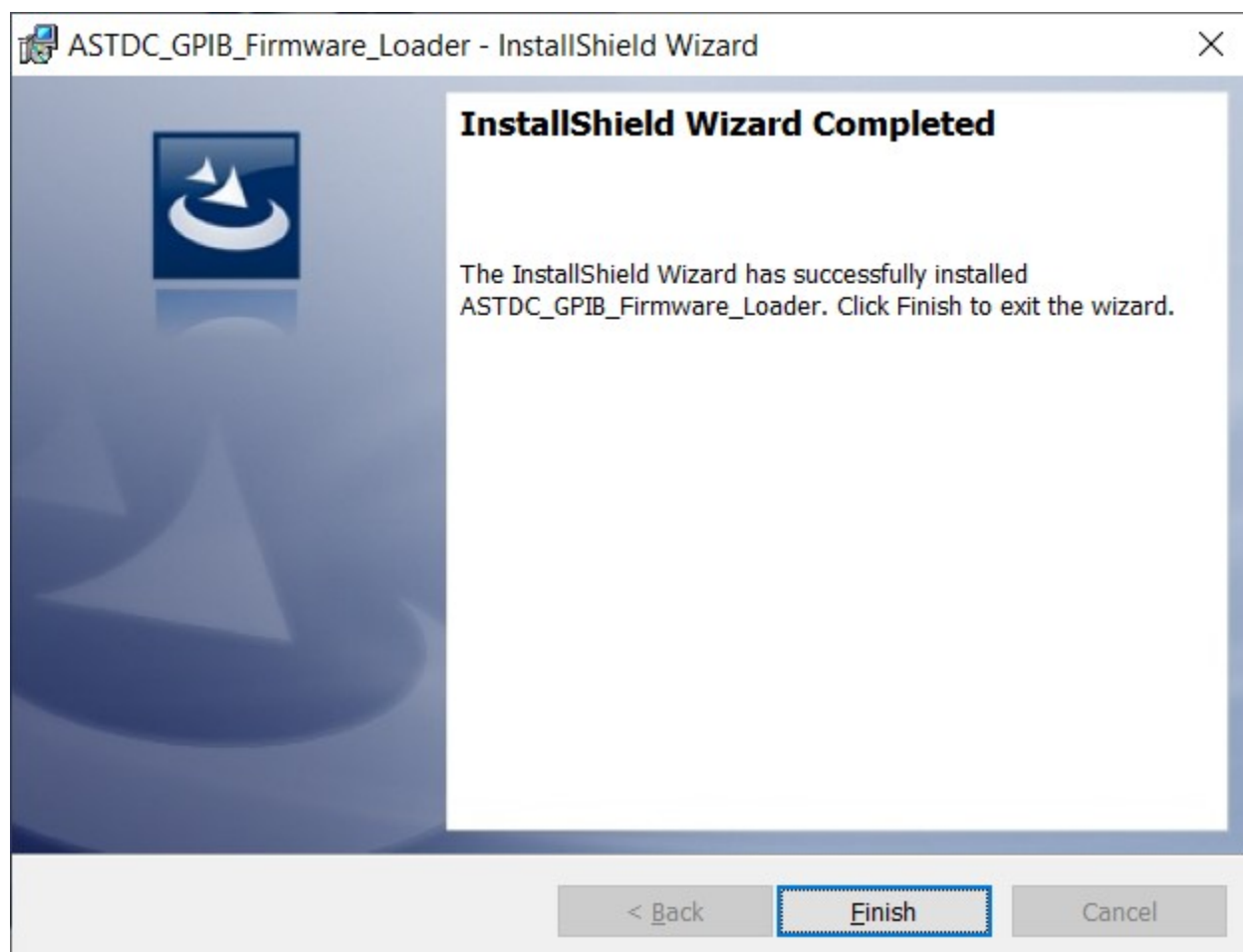
2. Accept license agreement to continue and then click Next.



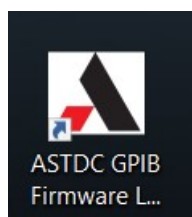
3. Click install button to start the installation process.



- Click Finish to complete the installation process.



- ASTDC GPIB Firmware Loader short will be created on desktop and in start-up menu list.



- Double click on the shortcut to open the ASTDC Firmware Loader tool.

AST-DC GPIB Firmware Updater V1.0.0

AMETEK
PROGRAMMABLE POWER

AST-DC GPIB Firmware Updater

TCP Settings

☒ TCP/IP

IP Address: 10.214.54.186

Port: 52000

Firmware File Name: D:\Programmable Power\ASTDC\Images\ViPR_AIB_ **Browse**

File Transfer Progress:

Help **Connect** **Load Firmware**

7. Select the controller type to which the firmware needs to be loaded.
8. The IP Address of the power device needs to be entered.
9. The user needs to enter appropriate port number to which the power device is connected.
10. The user needs to browse and select the firmware file that is located on the local computer. The file extension of the GPIB firmware file is *.hex.
11. The "Connect" button is used to connect to the device before loading the firmware. The "Load Firmware" button will be enabled, only if connection to the device is successful.
12. The user needs to click on the "Load Firmware" button to start the process of the loading firmware to the power unit. If the provided interface settings are correct, the firmware loading starts, otherwise appropriate error message is displayed to users. The firmware file transfer progress status will be provided to user under this section.

California Instruments Product Support:

On-Line Request:

www.programmablepower.com/support/support_CallInst.htm

Direct: ci.ppd@ametek.com

Phone: 800-733-5427